

# Public Document Pack



## **Democratic Support**

Plymouth City Council  
Civic Centre  
Plymouth PL1 2AA

Please ask for Katey Johns/ Helen Rickman

T 01752 307815/ 398444

E [katey.johns@plymouth.gov.uk](mailto:katey.johns@plymouth.gov.uk)/

[helen.rickman@plymouth.gov.uk](mailto:helen.rickman@plymouth.gov.uk)

[www.plymouth.gov.uk/democracy](http://www.plymouth.gov.uk/democracy)

#plymplanning

## **PLANNING COMMITTEE**

### **PRESENTATION**

Thursday 24 April 2014

4 pm

Council House, Plymouth (Next to the Civic Centre)

#### **Members:**

Councillor Stevens, Chair

Councillor Tuohy, Vice Chair

Councillors Darcy, Sam Davey, K Foster, Mrs Foster, Jarvis, Nicholson, John Smith, Stark, Jon Taylor and Wheeler.

PLEASE FIND ATTACHED A COPY OF THE PRESENTATION SHOWN AT THE MEETING UNDER AGENDA ITEM NO. 7.

**Tracey Lee**

Chief Executive

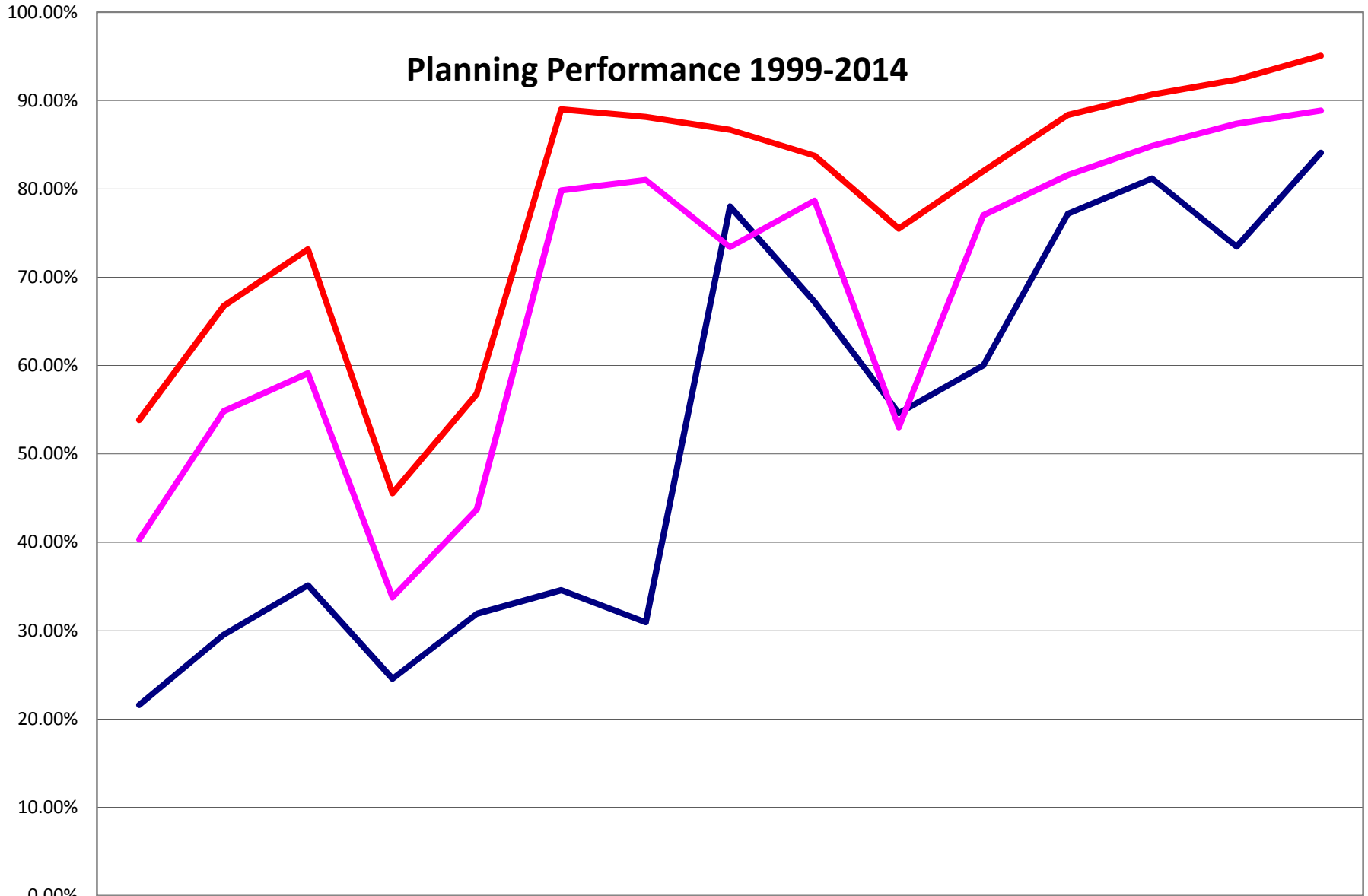
## **PLANNING COMMITTEE**

### **7. PLANNING PERFORMANCE 2013/14**

**(Pages 1 - 10)**

Committee Members will be provided with a presentation upon planning performance 2013/14.

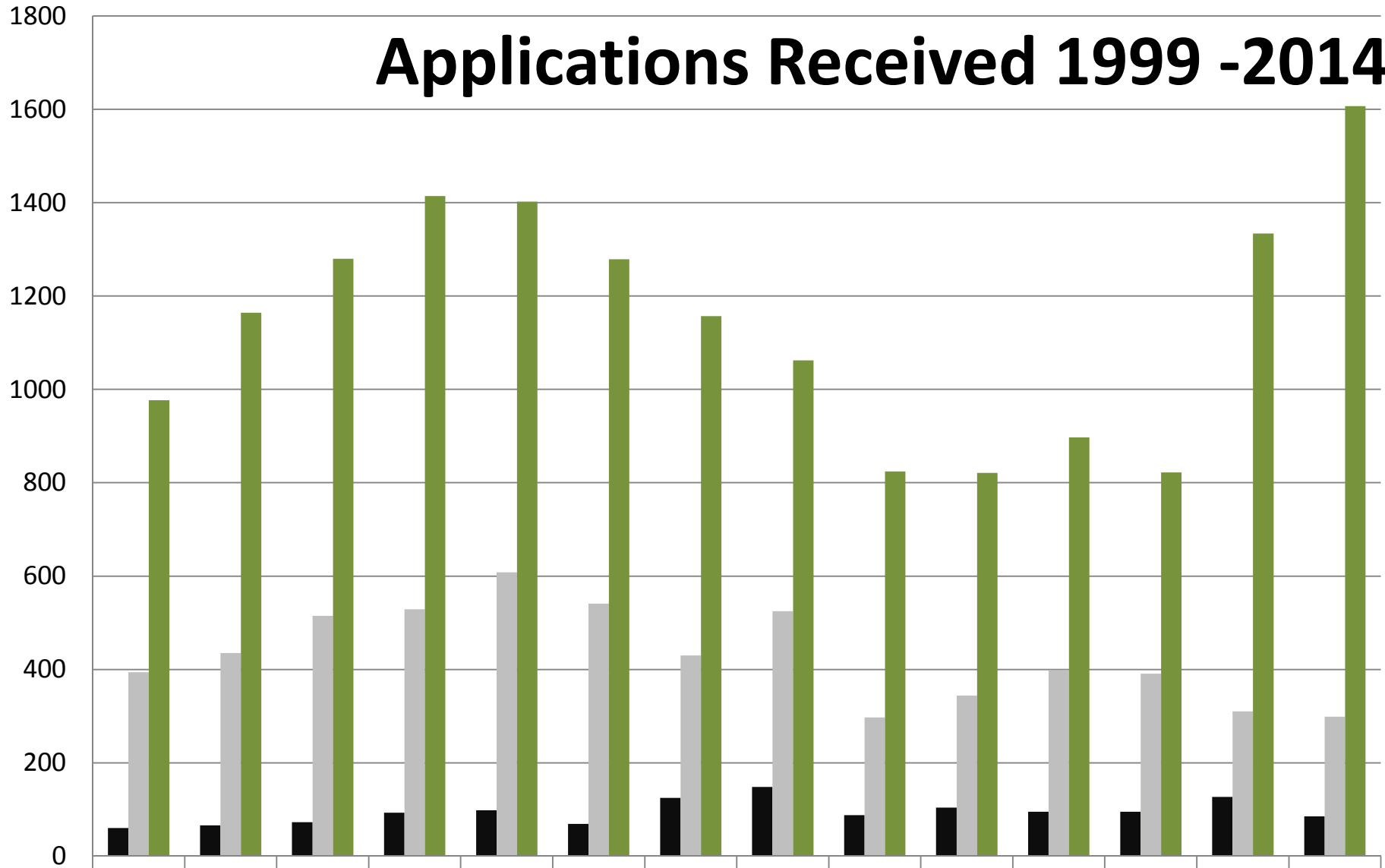
### Planning Performance 1999-2014



Major	21.57%	29.55%	35.14%	24.56%	31.90%	34.57%	30.95%	78.00%	67.20%	54.60%	60.00%	77.17%	81.18%	73.45%	84.09%
Minor	40.31%	54.83%	59.12%	33.76%	43.69%	79.83%	81.02%	73.39%	78.67%	53.00%	77.00%	81.55%	84.86%	87.38%	88.85%
Others	53.85%	66.74%	73.16%	45.54%	56.80%	88.99%	88.13%	86.68%	83.75%	75.50%	82.00%	88.36%	90.68%	92.36%	95.06%

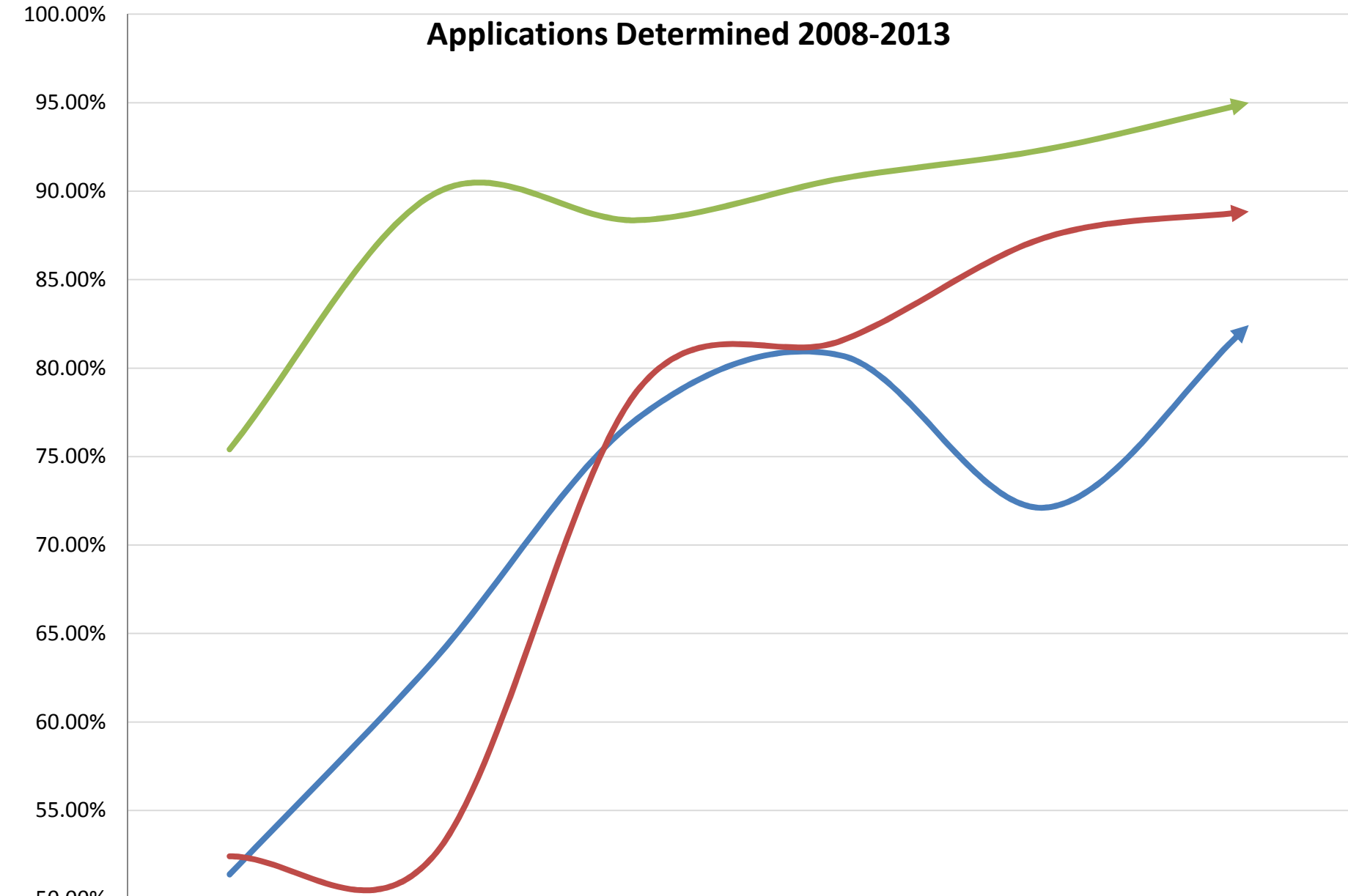
Planning Authority	Total Major Decisions	Number granted	Percentage granted	Percentage within 13 weeks	Percentage over 13 weeks	PPA	
						Total Decisions	Decisions made within agreed time limit
<b>Plymouth</b>	<b>109</b>	<b>103</b>	<b>94</b>	<b>83</b>	<b>17</b>	<b>10</b>	<b>10</b>
Bristol, City of	97	87	90	71	29	13	10
Coventry	77	73	95	99	1	-	-
Dudley	75	68	91	75	25	-	-
Sunderland	59	58	98	63	37	4	3
Southampton	58	45	78	60	40	12	12
North Tyneside	55	50	91	69	31	-	-
Gateshead	54	52	96	89	11	4	4
Calderdale	42	38	90	79	21	7	7
Derby	38	36	95	61	39	5	5
Wirral	38	30	79	53	47	-	-
North East Lincolnshire	37	34	92	68	32	-	-
Sefton	32	31	97	75	25	1	1
Redcar & Cleveland	26	25	96	65	35	1	1
Darlington	25	25	100	84	16	2	2
Blackpool	23	22	96	70	30	-	-

# Applications Received 1999 -2014



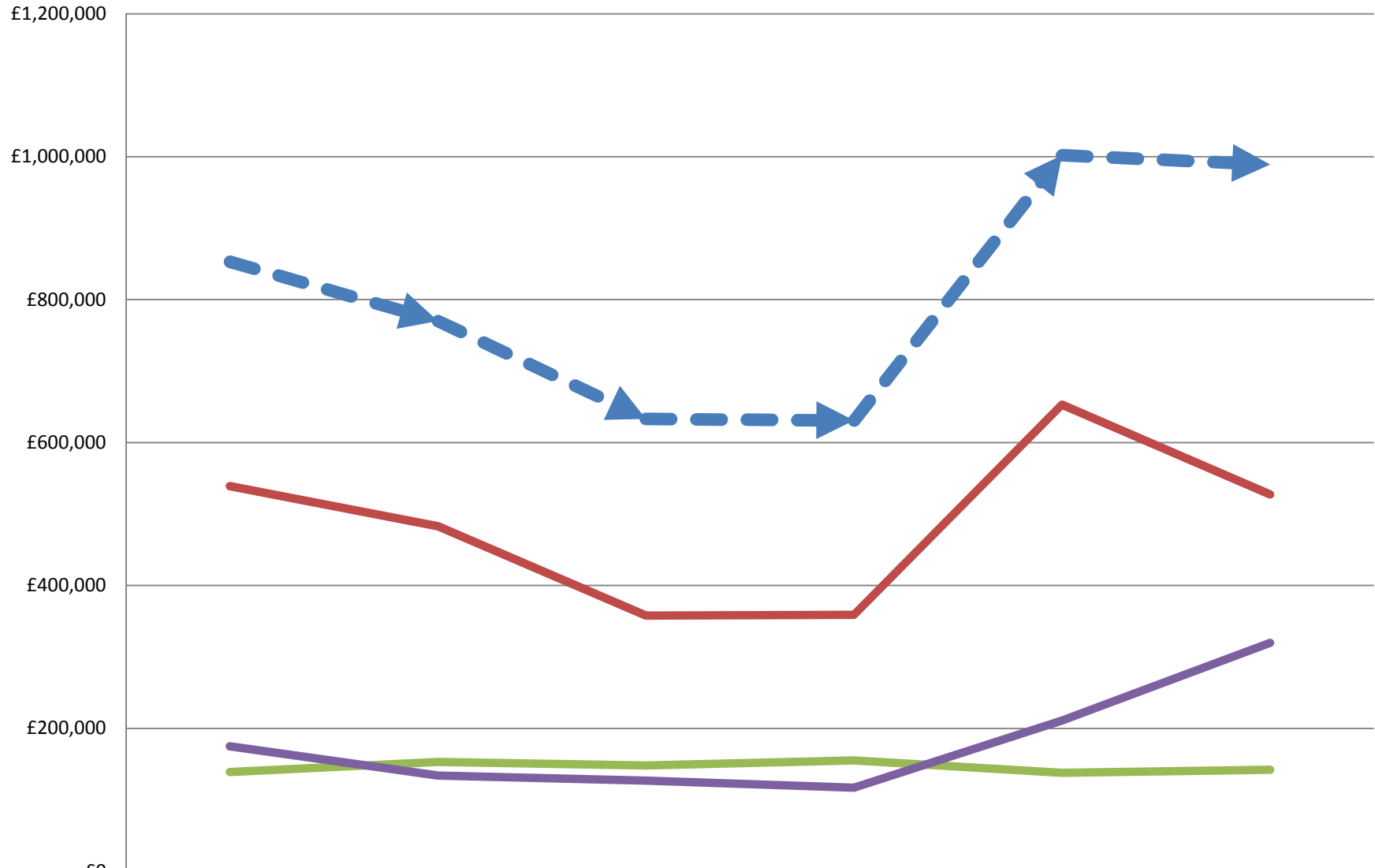
Major	60	66	73	93	98	69	125	148	88	104	95	95	127	85
Minor	394	435	515	529	608	541	430	525	297	344	398	391	310	299
Others	977	1164	1280	1414	1402	1279	1157	1062	824	821	897	822	1334	1607

### Applications Determined 2008-2013



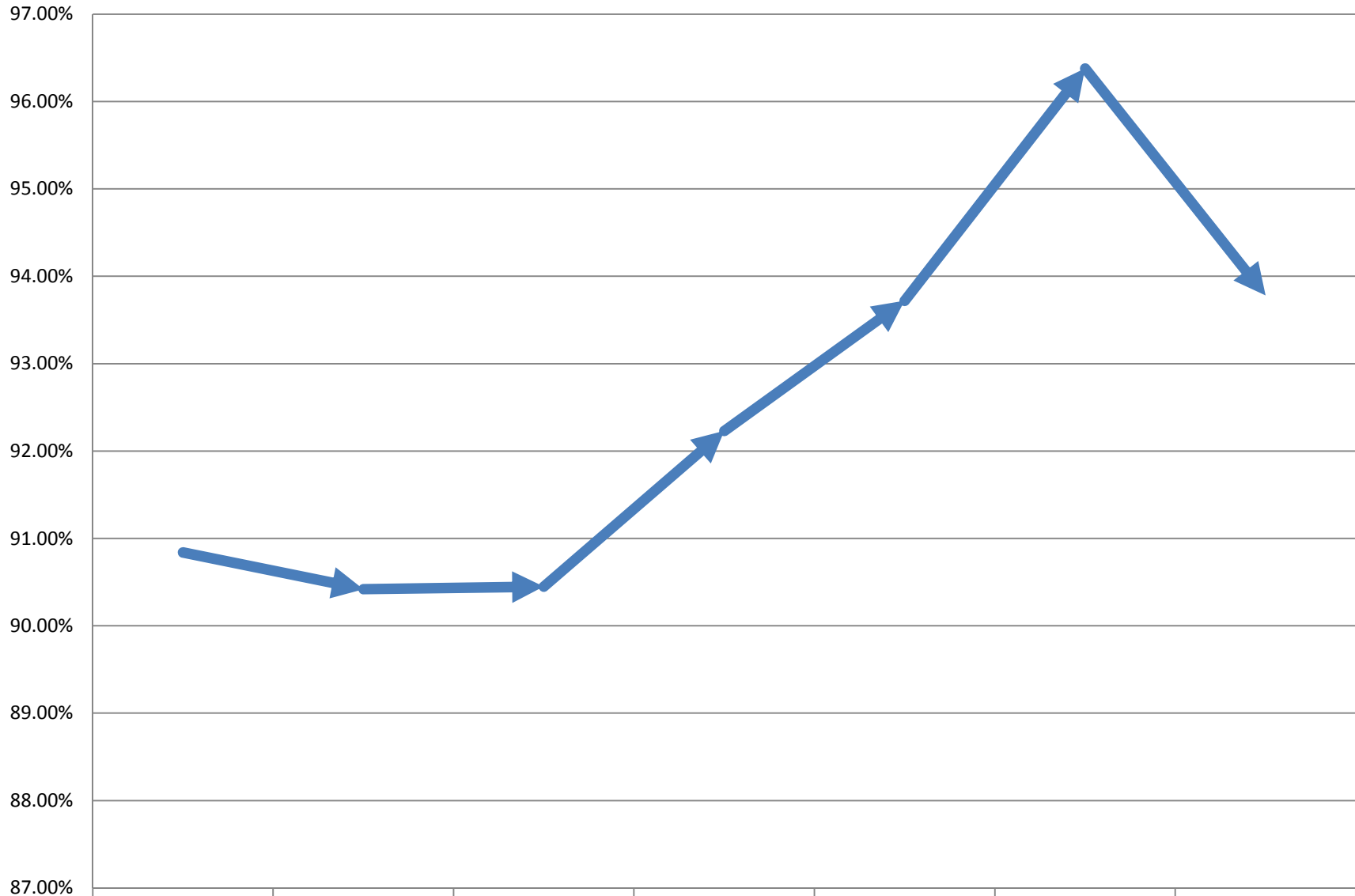
	2008	2009	2010	2011	2012	2013
→ Majors	51.39%	63.46%	77.15%	80.72%	72.12%	82.44%
→ Minor	52.41%	52.42%	78.73%	81.55%	87.38%	88.86%
→ Others	75.42%	89.83%	88.36%	90.72%	92.36%	95.00%

## Fees 2008-2014



	2008-2009	2009-2010	2010-2011	2011-2012	2012-2013	2013-2014
Major	£539,000	£483,000	£358,000	£359,000	£653,000	£527,437
Minor	£139,000	£153,000	£148,000	£155,000	£138,000	£142,282
Others	£175,000	£134,000	£127,000	£117,000	£211,000	£319,624
▶ Planning Totals	£853,000	£770,000	£633,000	£631,000	£1,002,000	£989,000

## Delegated - Committee 2006-2014

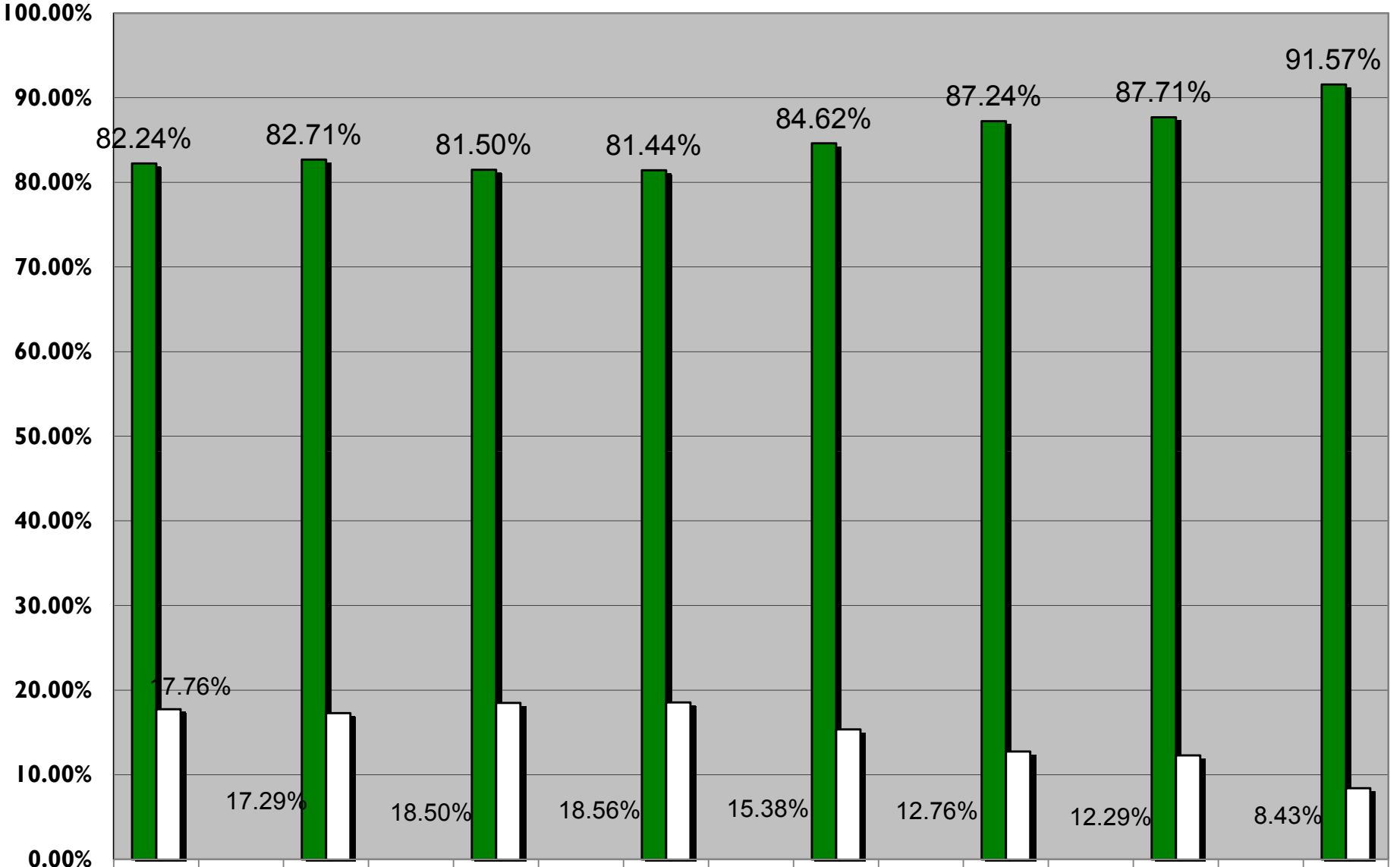


→ Delegated

2007-2008	2008-2009	2009-2010	2010-2011	2011-2012	2012-2013	2013-2014
90.84%	90.42%	90.45%	92.23%	93.72%	96.38%	93.78%

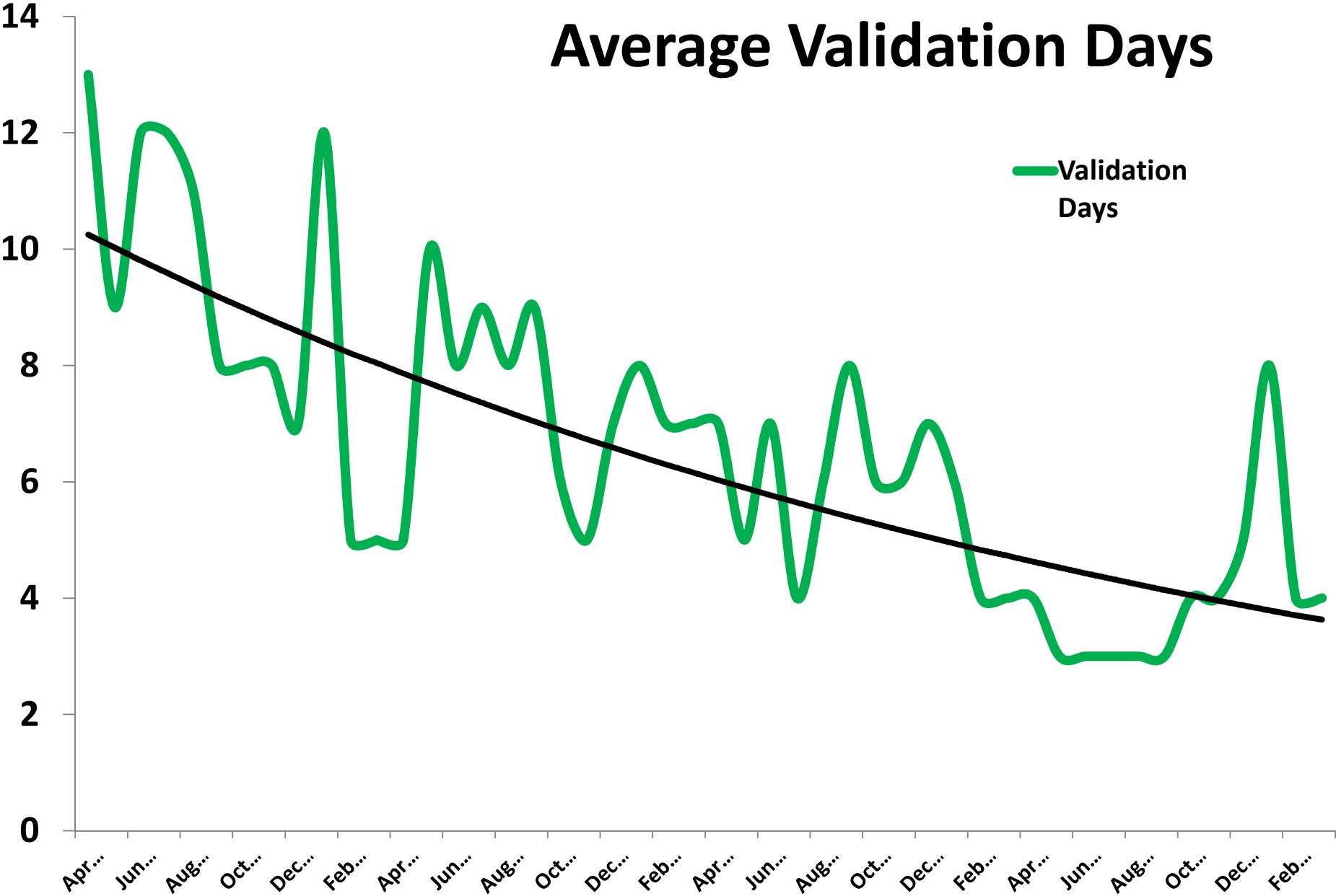


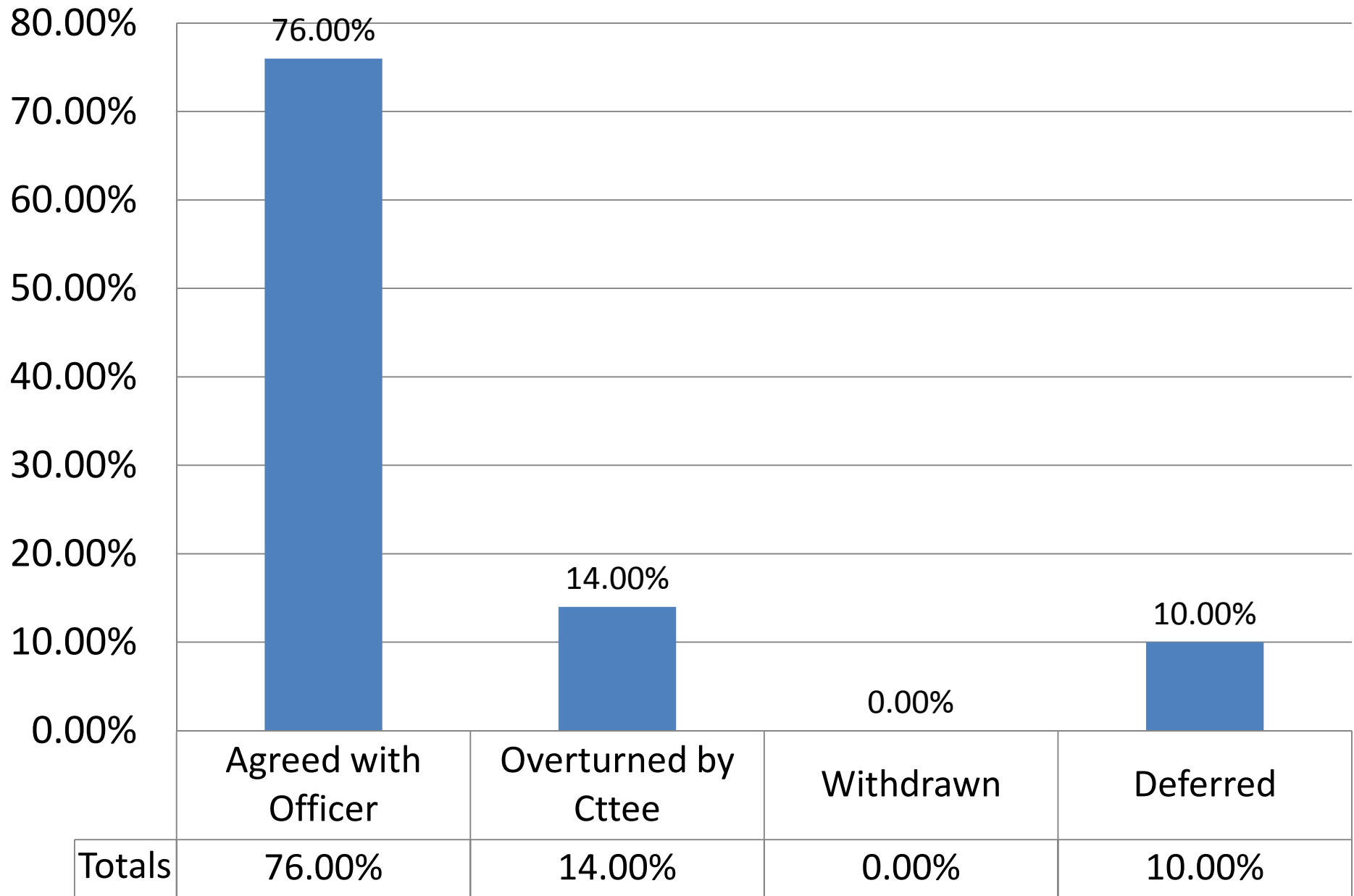
# Applications Approval Rate 2006-2014



■ Approved	82.24%	82.71%	81.50%	81.44%	84.62%	87.24%	87.71%	91.57%
□ Refused	17.76%	17.29%	18.50%	18.56%	15.38%	12.76%	12.29%	8.43%

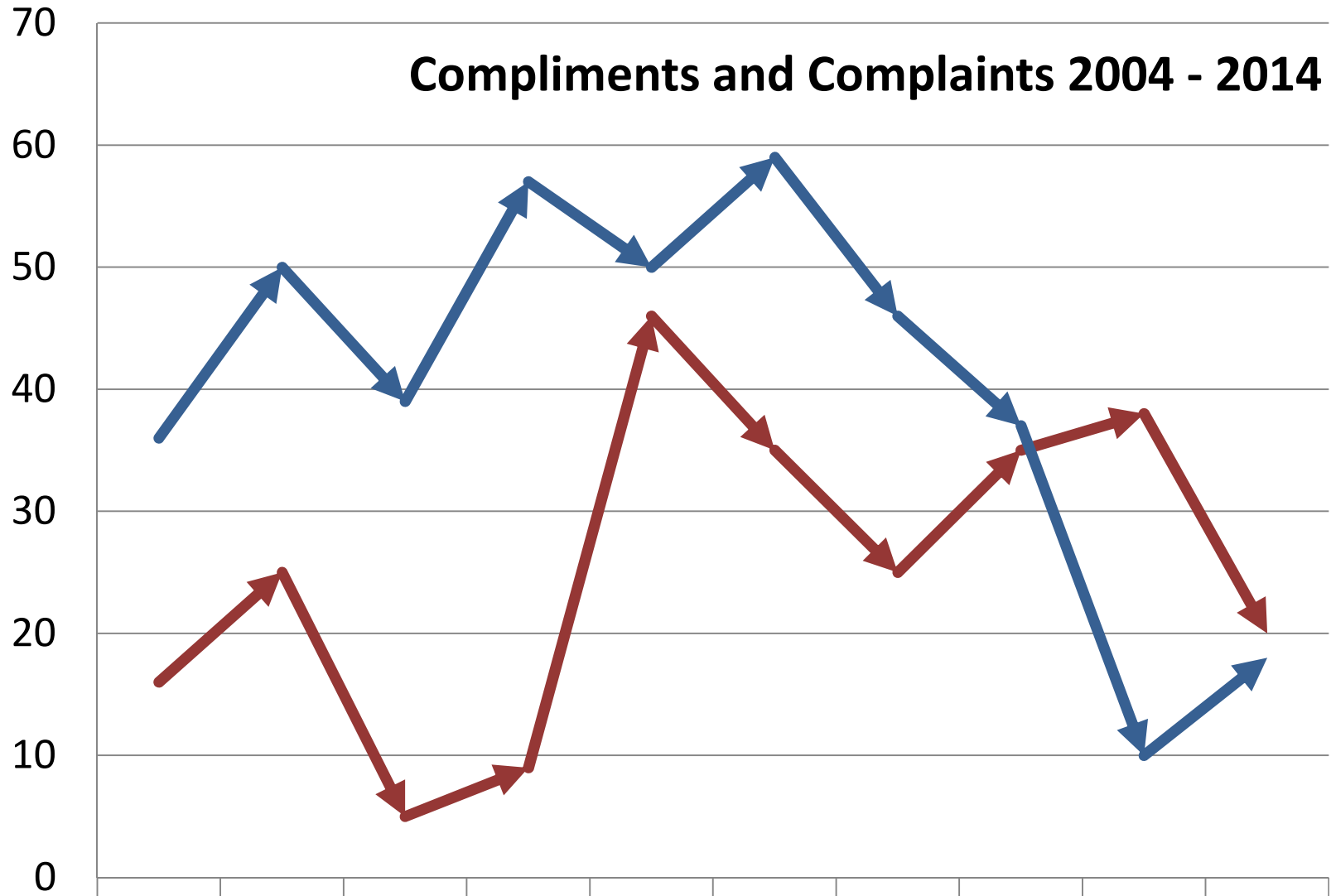
# Average Validation Days





Totals	76.00%	14.00%	0.00%	10.00%
--------	--------	--------	-------	--------

## Compliments and Complaints 2004 - 2014



➤	Compliments
➡	Complaints

2004-2005	2005-2006	2006-2007	2007-2008	2008-2009	2009-2010	2010-2011	2011-2012	2012-2013	2013-2014
16	25	5	9	46	35	25	35	38	20
36	50	39	57	50	59	46	37	10	18